

## Supporting Families with children with SEND

At The Family Hub, we understand the unique challenges faced by families with children with Special Educational Needs and Disabilities (SEND). Our commitment to providing tailored support and resources is at the heart of everything we do. From parenting courses and informational Let's Talk Sessions to sensory spaces, we are here to empower families on their journey.

**Did you know we offer parenting courses to support families with children with SEND?**

For parents of children aged 3-12 years

and

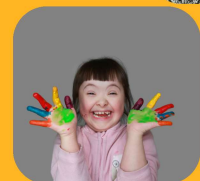
For parents of teenagers

Go to our website page to find out more and to register your interest. [CLICK HERE](#)

**Visit the page on our Website for more information about support available and for a list of specialist services in Wiltshire.**

[CLICK HERE](#)

**Sensory Play Spaces**  
available free in our Flag Ship Hubs-  
talk to us about what you need.



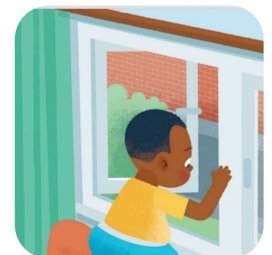
## Summer Safety



A BBQ and the ground underneath it can stay hot enough to cause a serious burn for a long time after it's been used. So stay alert and keep children well away from the cooking area until it's completely cooled

Open windows warning

- Keep low furniture away from windows so that children can't climb up and fall out.
- Install window catches to limit how far they can open.



Click here for more information

[child accident prevention trust](#)

Contact us by email:  
[wiltshirefamilyhub@spurgeons.org](mailto:wiltshirefamilyhub@spurgeons.org)

Contact us by phone:  
0800 970 4669

## Support We Offer

We are here to help with a whole range of topics including:

Ideas around implementing routines and setting boundaries.

Help to understand your child's needs and build your confidence as a parent.

Help around finances, housing applications, debt support and accessing benefits.

Supporting you 'back to work'

Volunteering opportunities

## We can help families access:

Baby Bundles

Healthy start vitamins

Advice on local childcare and applying for funding.

Introductions to other services

## Facebook

Our Wiltshire Family Hub Facebook page is another way for families to stay up to date with current services. Make sure you like and follow to stay in touch with us.

Simply click here:



## Get in touch with us

If you have any questions or would like more information about our services please call us on one of our numbers below or check out our website:

**Freephone:**

**0800 970 4669**

[wiltshirefamilyhub@spurgeons.org](mailto:wiltshirefamilyhub@spurgeons.org)

**Other useful numbers:**

**Health visitor – Single Point of Access**

**0300 247 0090**

**National Breastfeeding helpline**

**0300 100 0212**

**Fearfree (Domestic Abuse support Service)**

**01225 775276**

**National Domestic Abuse Helpline**  
**0808 2000 247**



Click here to visit  
our website

[www.wiltshirefamilyhubs.org.uk](http://www.wiltshirefamilyhubs.org.uk)